

# Road Rail Power

## Working together to deliver solutions

South East Queensland (SEQ) is one of the most sought after places to live in Australia. The unique lifestyle, strong economic growth and natural environments are just some of the reasons why SEQ is Australia's fastest growing region. To meet the demands of this growth the Queensland Government has developed the South East Queensland Infrastructure Plan and Program (SEQIPP).

The SEQIPP commits the Queensland Government to a program of infrastructure over a twenty-year period. However the SEQIPP is not just a new planning document, it also marks the beginning of a new era of improved interaction ensuring state agencies align their infrastructure and service priorities

in the region including all the planning, design, construction and proposed investigations necessary in order to achieve the SEQ Regional Plan.

The southern Gold Coast area is facing challenging times with the number of design and construction projects currently underway.

### These projects include:

- » Pacific Motorway Upgrade Planning Study;
- » Robina to Varsity Lakes Rail Extension Project;
- » Planning for Varsity Station Village;
- » Planning study of rail extension from Varsity Lakes to Tugun; and
- » Mudgeeraba to Tugun Powerline Project.

These Queensland Government projects are being led by Main Roads, Queensland Transport, QR (Queensland Rail) and ENERGEX. Achieving a whole-of-government solution in the southern Gold Coast area is the highest priority for all these agencies. Representatives from these organisations are planning together for these infrastructure challenges and ensuring a best-for-community approach.

Co-locating infrastructure has the potential to reduce the need for new infrastructure sites and corridors, thereby reducing the overall cost to the community.



## So what are the challenges?

### The challenges for the M1 corridor from Varsity Lakes to Tugun include:

- » Working with the community to find the best way to fit a road upgrade, rail line and powerlines within the current M1 corridor to meet future infrastructure demands;
- » Coordinating the designs for all projects given the differing project time frames and construction staging; and
- » Designing infrastructure upgrades to meet future requirements with minimal impact on neighbouring properties.



## New Road

### Main Roads concept design

Main Roads is working collaboratively with the other Government agencies operating in the corridor to complete the concept design for the section of the Motorway from Varsity Lakes to Tugun. Due to project complexities for developing and constructing infrastructure some adjustment to the M1 upgrade project priorities and timelines may be necessary as staging costs become clearer.

The concept design for the Motorway will be available to the public in early 2008. Details of this design and other consultation activities will be advertised in your local newspapers and on the Main Roads website at:

[www.mainroads.qld.gov.au](http://www.mainroads.qld.gov.au)

### The Planning Study Team for the motorway is considering the following features for the concept design for the M1 Upgrade:

- » Widening the Motorway from four to six lanes to reduce congestion and improve safety and travel times;
- » Major upgrades to improve access to and from the M1 and interchange traffic movements;
- » Providing a service road on the western side of the M1 from Guineas Creek Road to north of Tallebudgera Interchange;
- » Providing access to the M1 from 19th Avenue via a new service road;
- » New pedestrian and cyclist facilities; and
- » Noise mitigation measures to improve the impact of road traffic noise for local residents.

## Contact Information

Phone: Project freecall 1800 112 476

Fax: (07) 3858 6705

Attention: Pacific Motorway Upgrade  
Planning Study – South

Email: [pacificmotorwayupgrade@maunsell.com](mailto:pacificmotorwayupgrade@maunsell.com)

Visit: [www.mainroads.qld.gov.au](http://www.mainroads.qld.gov.au)

Go to: Projects / Roads / South East Queensland / South Coast Hinterland  
/ Pacific Motorway Upgrade - South

Write: Pacific Motorway Upgrade Planning Study – South

Reply Paid 1823

MILTON BC QLD 4064



# Varsity Lakes to Tugun Infrastructure Program

## New Rail

### QR

QR has started preliminary planning for the proposed rail extension from Varsity Lakes to Tugun.

This work is being undertaken to ensure public transport keeps pace with the rapid population growth in the Gold Coast region.

The benefits of this future rail extension include:

- » A better rail network for South East Queensland; and
- » An environmentally friendly alternative to road use.

This future project is part of the Queensland Government's \$82 billion, 20-year infrastructure plan to manage growth in South-East Queensland and protect our lifestyle. As part of this plan, around \$7 billion has been committed to investigate, plan and build a better rail network.

Robina to Varsity Lakes Rail Extension will be completed by 2010.

## Your Environment

The Queensland Government is committed to safeguarding all aspects of the environment. Main Roads, Queensland Transport, QR and ENERGEX are working together to identify the combined impact that a new road, rail and powerlines will have in the Varsity Lakes to Tugun area.

The project teams involved will investigate the potential environmental, social and economic impacts or benefits that their unique project will have on the area and present strategies to manage these impacts. During these studies, the project teams will draw on all findings to supplement their own reports.

On completion of these individual reports, an additional combined report will be produced to identify and manage the potential effects on the area.

## Related Projects

### Varsity Station Village

Queensland Transport is planning a transit oriented community to surround the future Varsity Lakes rail station. Residential, retail and commercial buildings are being planned for the precinct with a focus on accessible transport. For more information on this project phone **1800 031 562** or visit [www.varsitystationvillage.qld.gov.au](http://www.varsitystationvillage.qld.gov.au)

## New Power

### ENERGEX powerline developments

ENERGEX is proposing to build a pole construction powerline from Reedy Creek Road at Varsity Lakes, along the M1 to the Currumbin substation, then onto a proposed Tugun substation near the desalination plant.

ENERGEX is working with the Department of Main Roads, Queensland Transport, QR, Gold Coast City Council, the Queensland Government Coordinator General's Office, and the Gold Coast Desalination Alliance to provide for future community needs. Part of this project aims to meet electricity needs for the proposed expansion of the Tugun desalination plant.

Consultation on the proposed powerline will begin with the local community in early 2008, where you will have an opportunity to learn more about the project and provide feedback.

ENERGEX is committed to supplying a safe and reliable electricity supply to South East Queensland. For more information about this and other projects, visit [www.energex.com.au](http://www.energex.com.au) or call **13 12 53**





Varsity Lakes - Tallebudgera



**BURLEIGH INTERCHANGE**  
Exit 87

Tallebudgera - Tugun

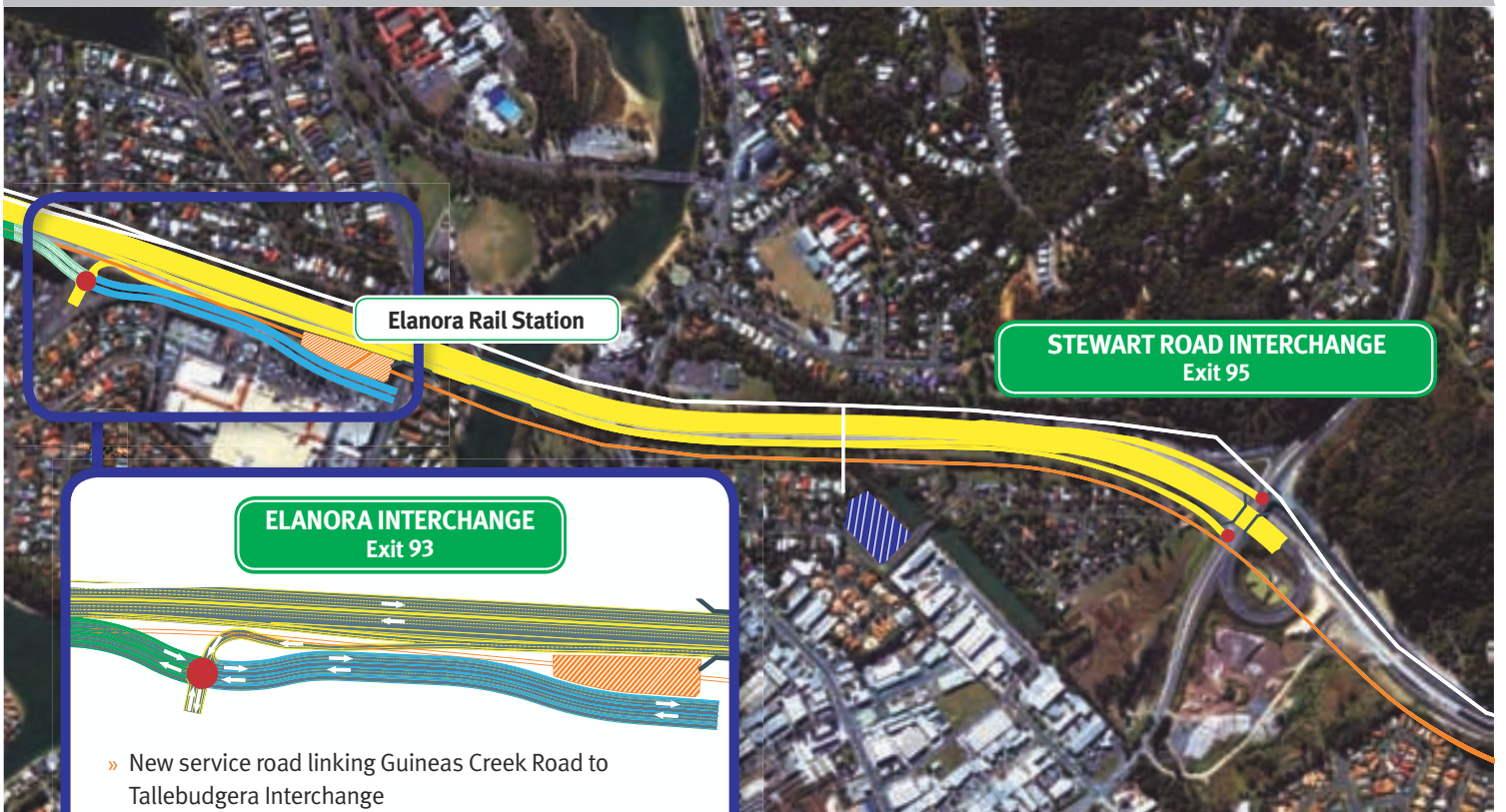


**PALM BEACH INTERCHANGE**  
Exit 92

- » New underpasses to connect Palm Beach Avenue and the southbound off ramp
- » Intersection upgrade at KP McGrath Drive and the western service Road

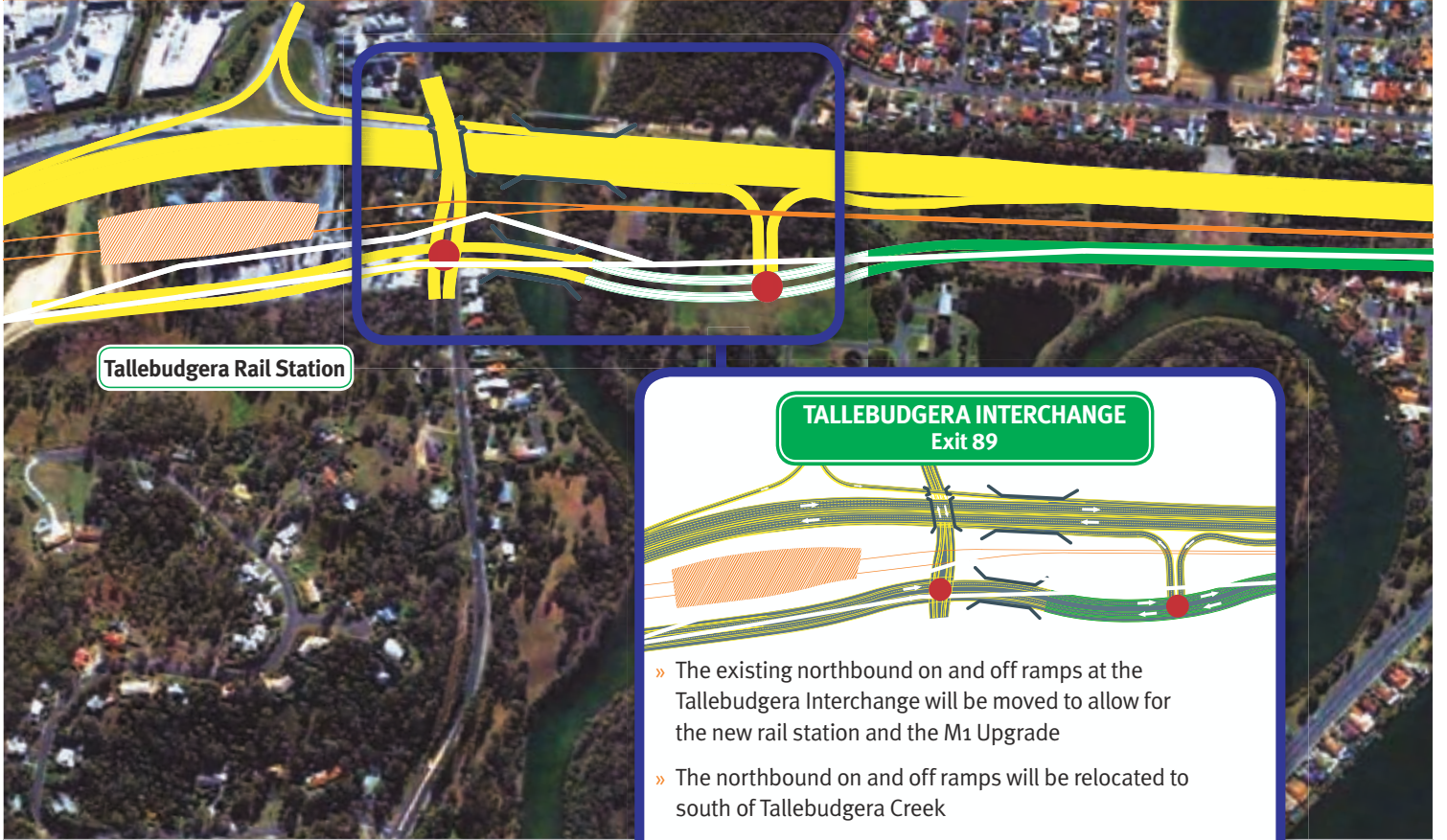


# Pacific Motorway Corridor



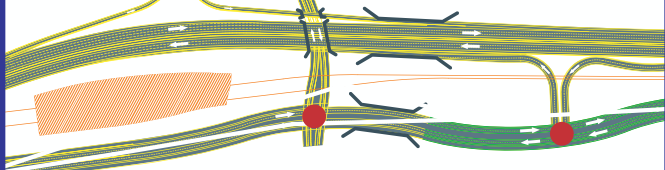
- » New service road linking Guineas Creek Road to Tallebudgera Interchange
- » Southbound traffic will access Guineas Creek Road via the Palm Beach Avenue off ramp
- » Southbound off ramp will be removed





Tallebudgera Rail Station

**TALLEBUDGERA INTERCHANGE**  
Exit 89



- » The existing northbound on and off ramps at the Tallebudgera Interchange will be moved to allow for the new rail station and the M1 Upgrade
- » The northbound on and off ramps will be relocated to south of Tallebudgera Creek
- » Connections to Tallebudgera Creek Road and the northbound on and off ramp will be via the western service road













Tugun Rail Station

**TUGUN BYPASS**





## Legend

- |   |  |
|---|--|
|  M1 Motorway Upgrade / Ramp Upgrade      |  Road Bridge / Overpass               |
|  Service Road Upgrade                    |  QR rail extension                    |
|  New Service Road                        |  QR Station                           |
|  ENERGEX proposed powerline developments |  Indicates Traffic Signals            |
|  Gold Coast Desalination Plant           |  Augmentation to Currumbin Substation |

**Please note:** These are concept designs and are subject to change.

## Where to from here?

In April 2008, members of the Main Roads, QR and ENERGEX project teams will be available at public displays to answer any questions you may have in relation to the projects within the Varsity Lakes to Tugun area. Please see below for public display locations or log on to the following websites for further consultation activities:

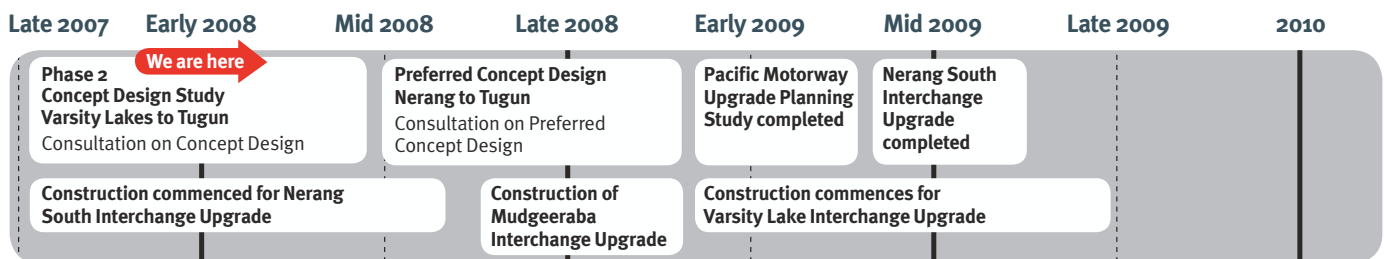
[www.mainroads.qld.gov.au](http://www.mainroads.qld.gov.au) [www.qr.com.au/seqip](http://www.qr.com.au/seqip) [www.energex.com.au](http://www.energex.com.au)

## Visit our public displays

Dates	Location	Times (Staffed)
14 – 19 April 2008	<b>Stockland Burleigh Heads</b> Burleigh West Shopping Centre 149 West Burleigh Road (Outside Gloria Jeans Cafe)	<b>Thursday 17 April</b> 4:00pm – 8:00pm <b>Saturday 19 April</b> 10:00am – 3:00pm
21 – 26 April 2008	<b>The Pines Shopping Centre</b> Cnr Guineas Creek Rd & KP McGrath Drive, Elanora (Outside Coles)	<b>Thursday 24 April</b> 4:00pm – 8:00pm <b>Saturday 26 April</b> 10:00am – 3:00pm
21 – 26 April 2008	<b>Woolworths Palm Waters Corner</b> Cnr 19th Avenue and Angelica Street (Outside Woolworths)	<b>Thursday 24 April</b> 4:00pm – 8:00pm <b>Saturday 26 April</b> 10:00am – 3:00pm

## Project Progress

### Pacific Motorway Upgrade Planning Study



### QR



### ENERGEX

